



BULLETIN

Ph: 4954 0404 Fax: 4956 5530 Email: cardiffnth-p.school@det.nsw.edu.au

Website: <https://cardiffnth-p.schools.nsw.edu.au>

Term 3 Week 5

19th August 2020

COMING EVENTS

Every Friday (until 18th September)
Dance2bfit

Permission Notes Sent Home and Payments Due

Tell Them From Me Survey Non-Consent Form
Friday 21st August

Overdue

Dance2bfit \$36
Note and payment overdue

Publishing Student Information Note
Sent home if student hadn't previously returned this note

First Aid Treatment Note
Sent home if student hadn't previously returned this note

Principal's Message

COVID 19 Update

From Wednesday 19th August the Department is implementing further measures in schools in line with current health guidelines. Following are the excerpts from the guidelines and how they relate to our school.

Flu like symptoms and COVID testing

Students and staff absent or sent home due to flu like symptoms need to be COVID tested. Schools must sight the negative COVID-19 result. Staff and students must not return to school until they return a negative COVID-19 result and are symptom free. Please email a screenshot of the certificate, email or text message that you are sent as evidence of your negative result to the school email before your child returns to school -

cardiffnth-p.school@det.nsw.edu.au.

Stage Groupings

All students will need to remain in stage groups whilst at school.

In the mornings

When students arrive at school in the morning they will go to their classrooms, where they will be guided by their teachers to the area that their stage will be playing in.

In the afternoons

Students will be directed by their teacher to their waiting area and will be separated into stage groups.

This will ensure **parents can still use the same gate that they have been using to collect their child/children during our current end of day procedures.**

At recess and lunch

Students will eat in their classrooms and then be moved by their class teacher to their stage play area. This area will be rotated each day so all students have access to all areas within the school throughout the week.

COVID-19 symptoms can include:



fever



sore throat



cough



shortness of breath.

If your child is sick, keep them at home and get them tested for COVID-19.

continued.....

Principal's Message continued

Additional Hygiene Measures

During the day, teachers will be encouraging students to use disinfectant wipes to wipe down their own learning spaces after each lesson or learning period.

All sporting and teaching / learning equipment will be disinfected after being used.

Parents on site

Parents are not allowed on site, except for exceptional circumstances involving welfare or disciplinary meetings.

Volunteers

Volunteers are not allowed on site. The uniform shop is the only exception at this time.

Canteen

Our canteen remains closed. Please ensure your child brings a packed lunch, recess and water bottle. Bubblers remain closed.

Physical Distancing

Physical distancing requirements remain for adults.

Group Activities

Some group activities such as choirs, chanting and the use of wind instruments in a group setting are not permitted.

Kindergarten and Year 7 Orientation Programs

Orientations should be delayed until Term 4.

School formals, dances, graduation or other social events

These are not permitted and schools should not promote or sanction social activities organised by others.

Thank you for your understanding as we work together to implement the Department's recommendations to keep our school community as safe as possible.

Have a beautiful week everyone and stay safe.

Allyson Corrigan

Principal
Cardiff North Public School
A proud member of the Cardiff Community of Schools

Parking

Please be mindful of parking signage when dropping off or picking up children from school.

This morning, a parking ranger was checking that parents were dropping off children while being mindful of the visible parking signage.

Tell Them From Me Survey: Parent Survey

This Term, our school will be participating in the Partners in Learning parent survey, another part of the Tell Them From Me suite of surveys (student, teacher and parent surveys) on student engagement. The survey asks parents and carers questions about different factors that are known to impact on student wellbeing and engagement.

Running this survey will help our school understand parents' and carers' perspectives on their child's experience at school. These include: communication between parents/carers and staff, activities and practices at home and parent/carer views on the school's support of learning and behaviour. This valuable feedback will help our school make practical improvements. The survey is conducted entirely online on smartphones, iPads, tablets, laptops or computers. The survey will typically take 15 minutes or less to complete and is completely confidential. The parent survey will be conducted over Term 3 and early Term 4. Although participating in the survey is entirely voluntary, your responses are very much appreciated.

Our school will provide further information about how to access the survey. In the meantime, more information about the survey is available at: <http://surveys.cese.nsw.gov.au>

P&C

Our first P&C Zoom meeting with the executive members was held last week. We have outlined some goals for the year which will be published in next week's Bulletin after being finalised by our team. Please join us via Zoom for our next meeting, held on 8th September at 10am. Details of the Zoom link will be published in next week's Bulletin along with the agenda.



Check-in Assessments for Year 3 & 5

Students in Year 3 and 5 will be participating in the online 'Check-in assessment' during term 3. The Check-in assessment is aimed to help CNPS to identify how students are performing in literacy and numeracy and to help teachers tailor their teaching more specifically to student needs.

The Check-in assessment is an online reading and numeracy assessment for students in Years 3, 5 and 9. It is not a standardised test and results will not be forwarded to parents/carers.

If you wish to discuss the Check-in please contact your Year 3 or 5 teacher.



Safety

around schools

Road rules in school zones

Pedestrian crossings

You cannot stop within 20 metres before a pedestrian crossing or 10 metres after a pedestrian crossing unless there is a control sign permitting parking.

Minimum penalty: \$439 and two demerit points

Double parking

You may not stop on the road alongside to another vehicle at any time even to drop off or pick up passengers.

Minimum penalty: \$330 and two demerit points

Parking on a verge

You cannot stop or park on a verge area (footpath, nature strip, dividing strip or kerb).

Minimum penalty: \$183 and two demerit points

Slow down

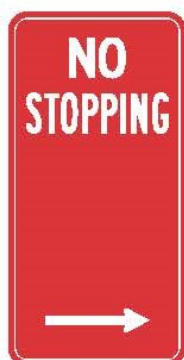
Stick to the 40km/h speed limit in a school zone and look out for children who may be about.

Kiss and ride

Some schools have 'kiss and ride' or 'drop-off and pick-up zones' for children in 'No Parking' zones. If your school has a program in place, remember to always drop off or pick up your child from the designated zone and follow the school's procedures. You can stop in a kiss and ride area for two minutes only to pick up passengers and you must stay within three metres of the vehicle.

If your school does not have a 'kiss and ride' program in place please use the 'No Parking' zone to drop off and pick up passengers.

PARKING RESTRICTION SIGNS



You cannot stop here

A driver must not stop in a no stopping zone.

*Minimum penalty:
\$330 and two demerit points*



You cannot stop here

You are not allowed to stop your vehicle unless you are driving a bus.

*Minimum penalty:
\$330 and two demerit points*



You can stop here for two minutes only

You have no more than two minutes to drop off or pick up passengers or goods and the driver must stay within three metres of the vehicle.

*Minimum penalty:
\$183 and two demerit points*



You cannot stop here

Unless a current Mobility Parking Scheme (MPS) permit is displayed.

*Minimum penalty:
\$561 and one demerit point*



Tell Them From Me student survey

Frequently Asked Questions (parents and carers)

Centre for Education Statistics and Evaluation

1. What is the *Tell Them From Me* student survey?

The *Tell Them From Me* student survey asks questions about factors that are known to affect academic achievement and other outcomes. It aims to help improve the learning outcomes of students. The survey is designed to measure, assess and report insights from the student point of view at the school and system levels. The focus of this NSW survey is on student wellbeing, engagement and effective teaching practices.

2. What kind of questions will the survey ask?

The survey questions relate to the following measures for **primary schools**:

Participation in sports and extra-curricular activities	Behaviour at school	Effective learning time
Use of ICT for learning	Homework behaviour	Teaching relevance and rigour
Sense of belonging	Interest and motivation	Perseverance
Positive relationships	Effort	Experience of being bullied
Valuing school outcomes	Skills and learning challenge	Advocacy at school
Positive teacher-student relations	Expectations for success	Positive learning climate

The survey questions relate to the following measures for **secondary schools**:

Participation in sports and extra-curricular activities	Homework behaviour	Expectations for success
Skills and learning challenge	Academic self-concept	Behaviour at school
Experience of being bullied	Truancy	Sense of belonging
Interest and motivation	Effective learning time	Aspirations: finishing Year 12, University, TAFE
Positive relationships	Effort	Teaching relevance and rigour
Wellness	Valuing school outcomes	Positive learning climate
Academic buoyancy	Advocacy at school	Advocacy outside school
Positive teacher-student relations	Use of ICT for learning	Perseverance

3. How have schools been selected to take part?

The survey is open to all NSW government schools at no cost to them. Your child's school has decided to participate.



4. How will taking part in this survey benefit my child's school?

The *Tell Them From Me* student survey will provide school principals and school leaders with insight into student engagement, wellbeing and effective teaching practices at their school, from the perspective of students.

Data collected from the survey responses are quickly compiled into reports for school leaders. Principals can then use this information to help them identify emerging issues and plan for school improvement.

5. What does my child need to do to participate in the survey?

The survey typically takes less than 30 minutes and is conducted entirely online through a secure website operated by the survey developers, *The Learning Bar*. Schools will make computers or laptops available so that students can complete the survey during school hours.

6. Does my child have to participate?

No, participation in the survey is optional. Your child will not take part if either you or your child do not wish. If, during the survey, your child is uncomfortable, he/she can choose to stop the survey at any time. The majority of questions in the survey can be skipped. Parents/students have a right to apply for access to, and correction of, a student's information.

7. Will the school be able to identify my child from their responses?

Staff in schools will not be able to identify individual students from their responses. To ensure confidentiality, participating students will receive a unique username and password. Where fewer than five students respond to a question, the results will not be made available.

A small number of staff in the department's Centre for Education Statistics and Evaluation (CESE) will have access to individual student responses for the purpose of state-wide

analysis. Individual students' data will be held on a secure server with access strictly limited to CESE researchers. The researchers are interested in trends only – not in individual student responses. No student will be identified in any publication. No school will be identified unless they have given permission.

8. What sort of analysis will be done on the survey data?

Once the surveys are completed by students, reports are prepared and in most cases are available to schools within three business days. School leaders can use the data to better understand the experiences and views of students at their school. CESE will undertake state-wide analysis of the survey data in conjunction with existing student data held by the department, including performance data.

The results will help all schools better understand the relationship between wellbeing, engagement, effective teaching and student learning. Results from CESE's analysis of this data will also help teachers and principals discuss what works to improve student outcomes. This supports the department's continuing focus on quality teaching and leadership. The data will be retained for future analysis to help us better understand the nature of student engagement and wellbeing over time.

9. Can all school students participate in the survey?

The primary school survey is designed for students in Years 4 to 6. Schools are encouraged to allow as many students as possible in these year groups to participate. Secondary schools are encouraged to allow as many students as possible in Years 7 to 12 to participate.

10. When will the *Tell Them From Me* survey happen?

The surveys will be conducted in all participating schools at the end of Term 1 and (optionally) Term 3/4.



What is CESE?

The Centre for Education Statistics and Evaluation (CESE) is part of the NSW Department of Education.

CESE has been established to improve the effectiveness, efficiency and accountability of education in New South Wales.

CESE will identify and share what works, creating new opportunities to improve teaching and learning across all of education.

More information about CESE is available at: www.cese.nsw.gov.au

What is *The Learning Bar*?

The Learning Bar specialises in research-based design and facilitation of student assessments and survey solutions for both primary and secondary students. The in-house research team led by the President, Dr J Douglas Willms, undertakes extensive projects used in the school system to affect national policy. It is against this research that the survey, *Tell Them From Me*, has become the largest national school survey in Canada, used in nine of the ten provinces. Globally, more than 6,300 schools and 5.4 million students have participated in the survey over the last twelve years.

Dr Willms recently held the Tier 1 Canada Research Chair in Literacy and Human Development. He plays a lead role in the development of questions on student engagement for the OECD's Programme for International Student Assessment (PISA).

For purely administrative purposes, *The Learning Bar* will also have temporary access to identifiable student responses to the survey questions. Other than *The Learning Bar* and CESE researchers within the department, identifiable student responses will not be disclosed to any other person or body other than as required by law.

More information about *The Learning Bar* is available at: www.thelearningbar.com

If you have any questions about the parent survey, please contact CESE via email: TTFM@det.nsw.edu.au or by telephone: **1300 131 499**.



P&C NEWS



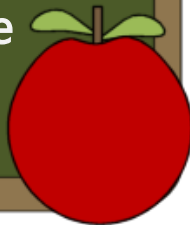
P&C MEETINGS

The next meeting is scheduled for

**8th September at 10am
via Zoom**

*Zoom link and meeting agenda will be
published in the next Bulletin.*

The Canteen
is currently closed.
We will let you know
when it will be
reopened.



Commonwealth Bank

The Uniform Shop is now Online!

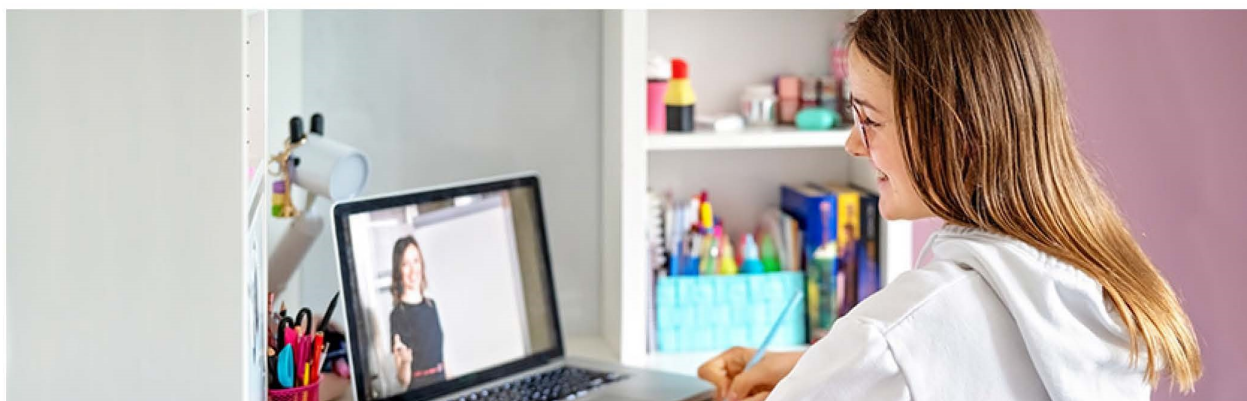
Go to <https://cnps-uniform-shop.square.site/>
to place an order using your credit card.



Orders will be sent home with students twice a week

INSIGHTS

Staying the course in COVID times



COVID-19 continues to test us in ways that were unimaginable at the start of 2020. It's becoming the defining event of this generation and a reference point for decades to come. We've had depression kids, war kids and now we have COVID-19 kids.

The impact of COVID-19 is felt differently across the country. Currently, Victoria is in Stage 4 lockdown while other states are on high alert. Not every student is working from home, but most students are COVID conscious, knowing that they're only a corona cough or virus-filled hug away from remote learning.

Encouraging kids to stay the course when they've been denied access to the classroom, peers and community activities is now a common parenting challenge. Denial is generally tolerable in the short term, but the novelty of changed circumstances soon wears off. The following strategies will assist both parents and kids to stay the COVID long course:

Accept difficult emotions

'There's nothing so bad that we can't talk about, but there are behaviours that we won't accept' is a mantra that serves families well. It's okay for children to feel frustrated, annoyed, angry or upset about their change of circumstances due to the pandemic but that doesn't give them permission to behave disrespectfully, miss school requirements or fail to assist at home. It helps if parents validate how their children feel, then encourage them to focus on fulfilling school and family expectations.

Encourage acceptance

Some children and young people will protest the COVID induced changes that have been imposed upon them. In some respects, it may be admirable for children to push for a better deal, but the severity of the COVID-19 pandemic means that the individual needs to bend toward the greater community good. This is simply a case of accepting and making the best of the situation at hand.

Take it one day and week at a time

On family bush walks my young children would rarely complain when the tracks were windy. The complaint levels rose when paths were long and straight as the finish line seemed such a long way off. In a similar vein during our current times it's smart to keep kids focused on getting through each day and week rather than look too far ahead. Six weeks of Stage 4 may seem intolerable, so it's better to focus on getting through each day and week.

Be the hope person

Help children and young people understand that they will get through difficult times. "This too shall pass" is perhaps the most apt meme for our times. If your hope bucket is emptying out, seek out positive friends and relatives who can top it up. Our own resilience needs nurturing if we are to last the distance.

parenting*ideas

The internal parenting manual that guides us probably doesn't include chapters dealing with remote learning, lack of peer interaction and kids' disappointment. Most of us are treading new parenting ground so it's best to be open to change, accepting of difficulties and forgiving of inevitable parenting stumbles.



Michael Grose

Michael Grose, founder of Parenting Ideas, is one of Australia's leading parenting educators. He's an award-winning speaker and the author of 12 books for parents including *Spoonfed Generation*, and the bestselling *Why First Borns Rule the World and Last Borns Want to Change It*. Michael is a former teacher with 15 years experience, and has 30 years experience in parenting education. He also holds a Master of Educational Studies from Monash University specialising in parenting education.

COVID-19 symptoms can include:



fever



sore throat



cough



shortness of breath.

If your child is sick, keep them at home and get them tested for COVID-19.



CARDIFF NORTH PUBLIC SCHOOL PUGGLES PROGRAM



Enrol Now for Kindergarten 2021



please call the school on
4954 0404 to register.



if you know of any local families with children
due to start kindergarten next year, please ask
them to call the school.

CARDIFF NORTH PUBLIC SCHOOL

Wansbeck Valley Road Cardiff NSW 2285

Phone: 4954 0404

Website: <https://cardiffnth-p.schools.nsw.gov.au/>

Email: cardiffnth-p.school@det.nsw.edu.au

CNPS Puggles Program proudly sponsored by



Andriessen Property
Newcastle